



## A white puppy born in Han Sung-min's painting "Munch"

The white puppy in the picture has a name Munch.  
The reason why a dog, not a person, is the main character in the story because he wanted to borrow the eyes of a third one in the world of people.

He wanted to talk about the foolishness of a person through a simple animal way of thinking by Munch.

Munch is a character who speaks to people in a cynical and sometimes cold way with a critic view.  
At the same time, he awakens the warmth of those who are forgetting in material civilization.

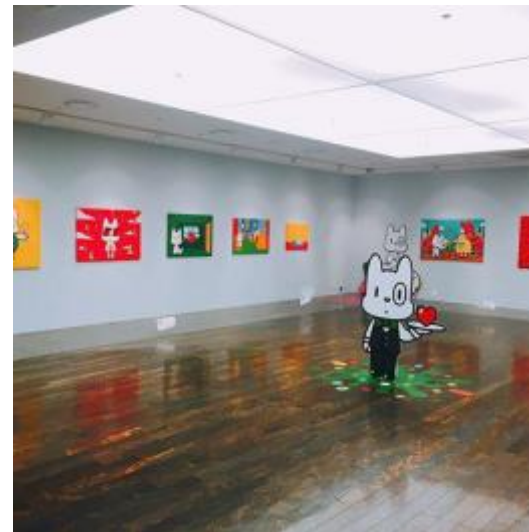
**EXHIBITION CAREER**

**개인전**

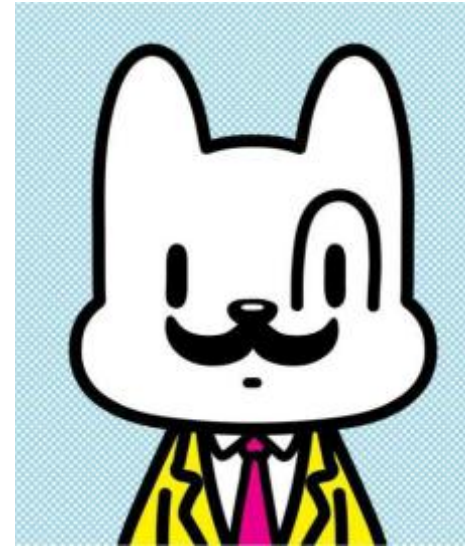
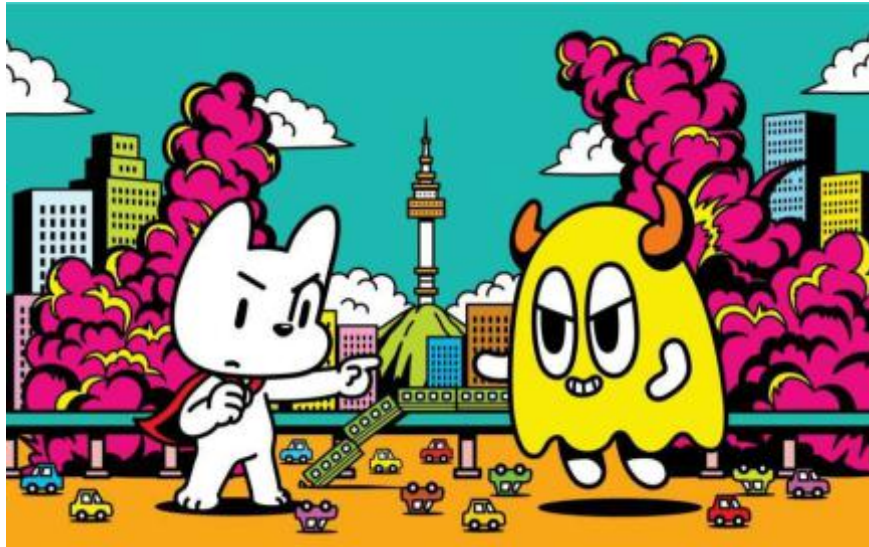
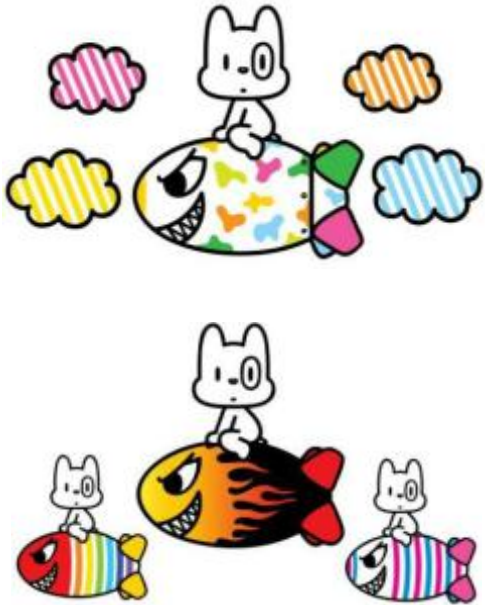
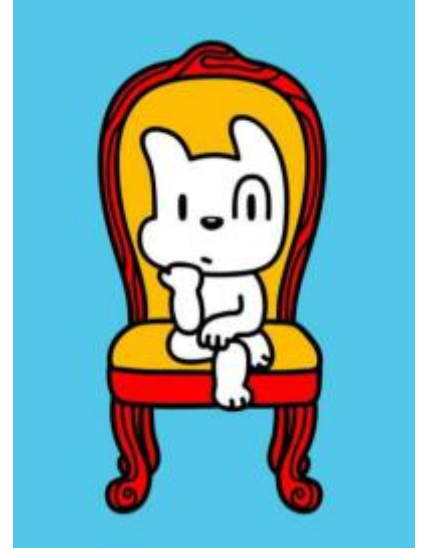
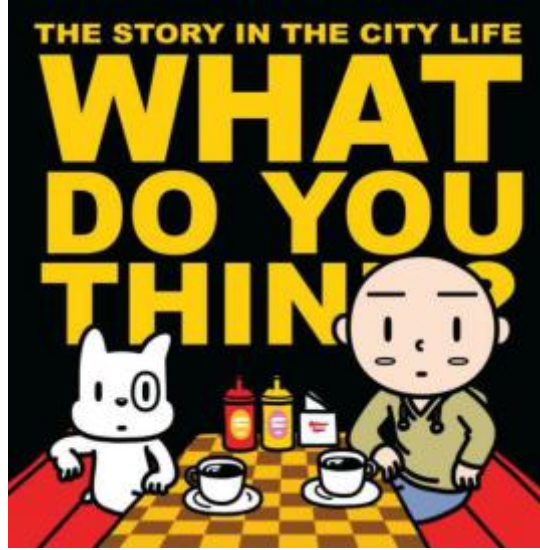
- 2011.08 [What do you think?]-한국만화박물관 카툰갤러리
- 2013.02 개인전-더 페이지 갤러리
- 2015.06 "몽크의 엉뚱한 상상"전-롯데백화점 갤러리
- 2016.04 "몽크의 귀여운 고뇌" 전-한국만화박물관 카툰갤러리

**그룹전**

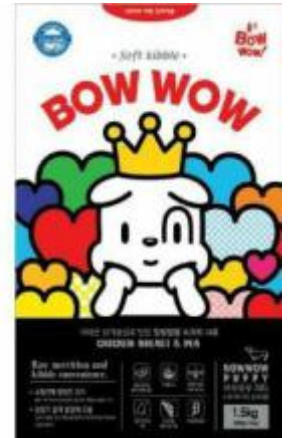
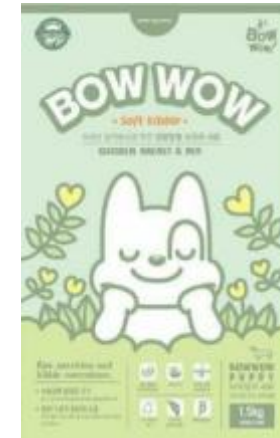
- 2004.07~2014.07 캐릭터페어 전시 참여-코엑스
- 2007.12 구경삼아 탈라라 그룹전시
- 2008.04 아쿠아갤러리 영아티스트 소품전
- 2009.04 그래픽 디자인 전시[Where is Your Design Identity?]-삼원갤러리
- 2010.09 부천국제만화축제 기획전시
- 2010.12 플라스틱 사탕전-아쿠아 갤러리
- 2012.07 배트맨 그룹전
- 2012.12 아쿠아갤러리 그룹전
- 2014.05 "쑹쑹 쑹쑹" 그룹전 - 롯데백화점 갤러리
- 2014.12 LG 아카폰 콜라보레이션 전시-롯데백화점 갤러리
- 2016.01 SWEET MATE - AK갤러리
- 2016.03 신바람, 양평전 - 양평군립미술관
- 2016.03 키덜트 토이전 - 오산시립미술관 외 다수



:: ABOUT munch Artwork ::

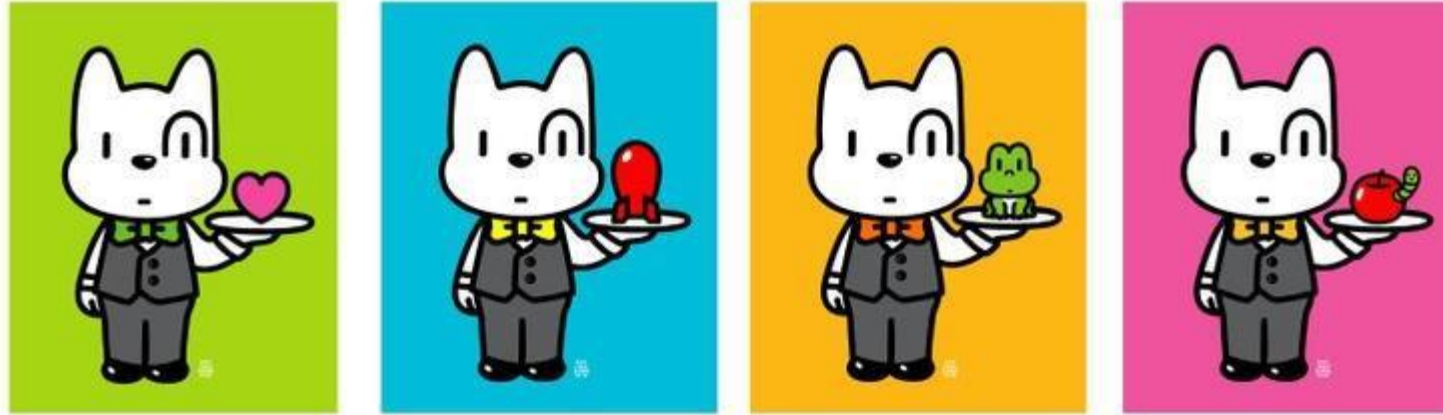


# :: ABOUT munch Products ::



# :: ABOUT munch Products ::





Heros Entertainment  
Contents Business Div.

T. +82-2-3789-2800

T. 010-3432-2510

E. [licensing@herosent.com](mailto:licensing@herosent.com)